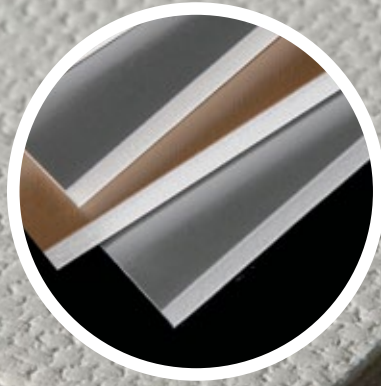


Design Boards

Special Surfaces & Fine Textures



Canvas Foam Boards

- Streamline the production of fine art products that demand the look of canvas or linen. No wrapping or stretching of printed images. Encore's Canvas Foam Boards fill the gap where genuine canvas stretchers and skilled labor are too costly.
- Textured surface enriches the artistic quality of photographs and painted images.
- Eliminates stretching canvas. Just print and frame or fold into a gallery wrap.
- Cuts easily by hand or machine.

High volume cut-to-size sheets available upon request.

Canvas 1/4"

- Dense polystyrene foam core
- Real Artists Canvas on one side

Embossed Canvas 3/16"

- Polystyrene foam core
- Embossed Canvas on two sides

Cork Foam Board

- 3/8" thickness so push pins won't damage walls
- Cuts easily by hand or machine
- Cork on one side
- Lightweight
- Print or Paint to create Designer Cork Foam Boards
- Print Team logos for College Students or Sports Fans

Chalkboard Foam Board

- Chalk surface on one side
- 3/16" thickness
- Printable surface. Add branding, borders or personal design
- Easy to clean
- Lightweight
- Easily cut by hand or machine

Dry Erase Foam Board

- True Dry Erase surface on one side
- 3/16" thickness
- Printable surface. Add branding, borders or personal design
- Easy to clean
- Lightweight
- Easily cut by hand or machine

Extreme White for Photography

- Bright White: The higher caliber paper enhances maximum color gamut and black density of printed images
- Enhanced printing surface – good detail and smooth skin tones
- Clay-coated
- Smooth bright white paper liners
- Resilient polystyrene "memory" foam core
- Lightweight
- Easy to cut

Mixed Metals






Brushed Aluminum & Brushed Gold

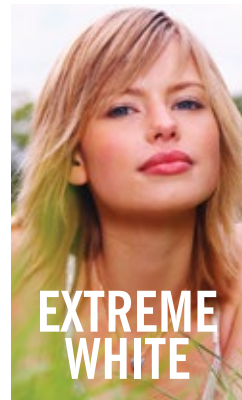
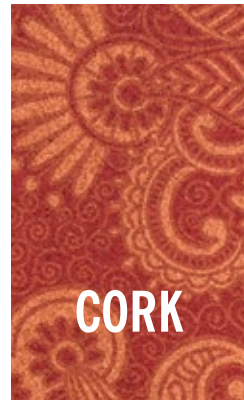
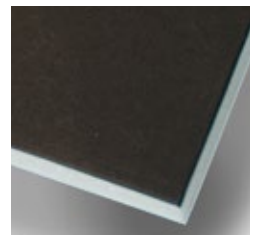
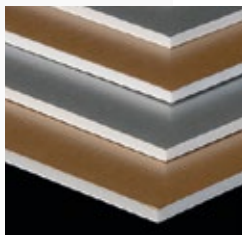
- Fully printable metallic paper surfaces
- End frustrations of printing on aluminum sheets or gold foils
- Dramatize and draw attention to displays and signage with a metallic tint
- Create high impact promotions and presentation items
- Partially Reflective
- Lightweight
- Easy to Cut
- Available Thicknesses: 3/16"



ENCORE[®] Products
a division of Newell Office Brands
2020 West Front Street
Statesville, NC 28677

Customer Service: 800-873-4868
Fax: 704-871-8671
Hrs. 8:00 am – 5:00 pm (EST)
www.encoreproducts.com
www.elmers.com

EnCore [®] Design Boards Specifications						
Item Number	Thickness (inches)	Sheet Size (inches)	Sheets Per Case	Sq. Feet Per Sheet	Sq. Feet Per Case	Cases Per Pallet
Canvas Foam Boards						
960-710	1/4"	48 x 96	12	32.00	384.00	12
905-240	3/16"	48 x 96	25	32.00	800.00	15
905-241	3/16"	60 x 120	20	50.00	1000.00	15
Cork Foam Boards <i>(Due to the inherent natural qualities of cork, each cork board will have their own variations in texture, color and grain.)</i>						
950-180	3/8"	20 x 30	10	4.17	41.70	30
950-182	3/8"	24 x 36	8	6.00	48.00	60
905-232	3/8"	40 x 60	12	16.67	200.04	15
950-233	3/8"	48 x 96	12	32.00	384.00	15
Chalkboard Foam Boards <i>(Colors indicated by color swatch next to width below — Black, Green or Blue)</i>						
950-185	 3/16"	20 x 30	10	4.17	41.70	40
950-191	 3/16"	20 x 30	10	4.17	41.70	40
950-192	 3/16"	20 x 30	10	4.17	41.70	40
950-190	 3/16"	24 x 36	8	6.00	48.00	60
950-186	 3/16"	40 x 60	25	16.67	416.75	15
Dry Erase Foam Boards						
950-029	3/16"	20 x 30	10	4.17	41.70	40
905-239	3/16"	40 x 60	25	16.67	416.75	15
Extreme White for Photography						
905-253	3/16"	48 x 96	25	32.00	800.00	15
Mixed Metals – Brushed Aluminum Foam Board						
905-300	3/16"	40 x 60	25	16.67	416.75	15
905-301LMR	3/16"	48 x 96	25	32.00	800.00	15
Mixed Metals – Brushed Gold Foam Board						
905-311	3/16"	48 x 96	25	32.00	800.00	15



WARNING: EnCore[®] Foam Board is flammable and may constitute a fire hazard if improperly handled. Do not expose to an open flame or other ignition source.
Newell makes no warranty of any kind, expressed or implied, as to merchantability, fitness for a particular purpose, or any other manner with respect to EnCore[®] Design Boards.